



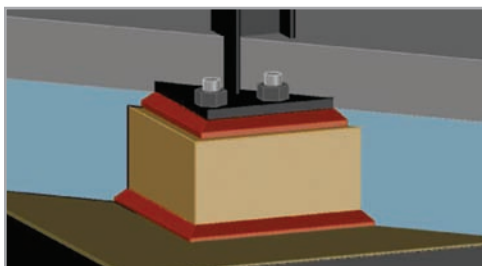
www.dowlowtempsolutions.com

COOL. UNDER PRESSURE. STYROFOAM™ BRAND LT SERIES COLUMN-BEARING BLOCKS

For more than 65 years, Dow has been an industry leader in providing insulation solutions for low-temperature buildings where thermal control is crucial to long-term performance and energy savings. Now, Dow introduces STYROFOAM™ Brand LT Series Column-Bearing Blocks to its lineup of low-temperature insulations:

- STYROFOAM™ Brand HIGHLOAD
- STYROFOAM™ Brand FREEZERMA™
- STYROFOAM™ Brand Square Edge
- THERMAX™ insulation portfolio
- FROTH-PAK™ Foam Insulation

STYROFOAM™ Brand LT Series Column-Bearing Blocks offer the same high quality and performance that designers and contractors have come to expect in Dow's other insulation solutions. The addition of the LT Series makes it easier for the design and build industry to select Dow for its insulation needs.



Advantages of STYROFOAM™ Brand LT Series Column-Bearing Blocks

- Energy savings – Reduced thermal bridging through steel columns
- Strength and stability – High compressive strength helps meet load support needs
- High moisture resistance – Closed-cell polyurethane foam resists moisture, has chemical stability and does not promote corrosion of steel
- Easy installation – Cut-to-size blocks are delivered to the job site and factory-drilled upon request



PERFORMANCE FROM THE GROUND UP

Installed between the concrete foundation and steel columns, the blocks provide a thermal break between the building interior and the supporting soils below, reducing thermal bridging through the steel column and increasing energy efficiency of the building. The high-density polyurethane blocks offer a higher R-value than lightweight concrete, treated wood blocks and other materials typically used in this application.*

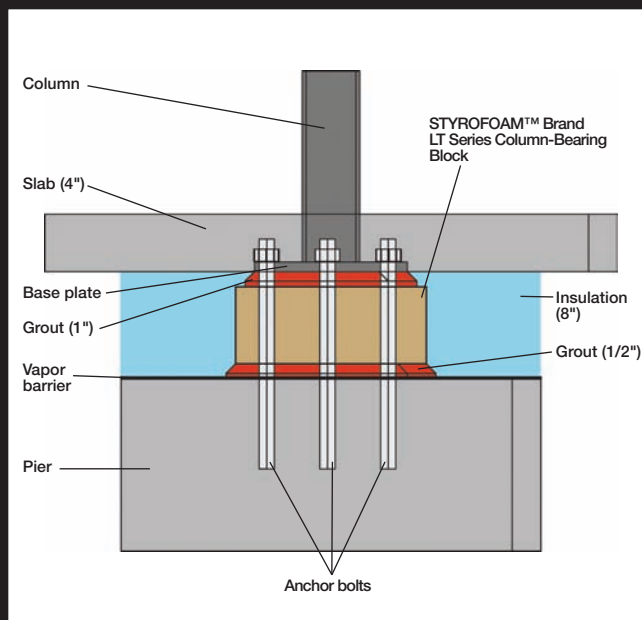
STYROFOAM™ Brand LT Series Column-Bearing Blocks are made of rigid polyurethane foam designed to be part of the structural support while insulating the building interior from the ground up. Blocks are resistant to moisture and will not rot, dissolve or absorb water. When installed below a column, they do not promote corrosion of steel.

®™Trademark of The Dow Chemical Company ("Dow") or an affiliated company of Dow

*R means resistance to heat flow. The higher the R-value, the greater the insulating power.

EASY INSTALLATION

STYROFOAM™ Brand LT Series Column-Bearing Blocks are supplied cut-to-size with pre-drilled, anchor bolt holes available per customer specifications. Delivered directly to the job site, the product is fully cured and ready to use, streamlining installation.



Column-bearing block provides a thermal break between steel columns and the concrete foundation

AVAILABLE IN THREE COMPRESSIVE STRENGTHS,
LT-1000, LT-1500 AND LT-1800, STYROFOAM™
BRAND LT SERIES COLUMN-BEARING BLOCKS
SUPPORT ALLOWABLE LOAD CAPACITY UP TO 1800 PSI.*

*BASED ON 2% DEFORMATION IN ASTM D1621 COMPRESSIVE STRENGTH TEST

Design, use and installation must comply with the requirements of all applicable codes and is the responsibility of a qualified design professional. Product code acceptance is determined by the local authority having jurisdiction.

NOTICE: No freedom from any patent owned by Dow or others is to be inferred. Because use conditions and applicable laws may differ from one location to another and may change with time, Customer is responsible for determining whether products and the information in this document are appropriate for Customer's use and for ensuring that Customer's workplace and disposal practices are in compliance with applicable laws and other government enactments. The product shown in this literature may not be available for sale and/or available in all geographies where Dow is represented. The claims made may not have been approved for use in all countries or regions. Dow assumes no obligation or liability for the information in this document. References to "Dow" or the "Company" mean the Dow legal entity selling the products to Customer unless otherwise expressly noted. NO EXPRESS WARRANTIES ARE GIVEN EXCEPT FOR ANY APPLICABLE WRITTEN WARRANTIES SPECIFICALLY PROVIDED BY DOW. ALL IMPLIED WARRANTIES INCLUDING THOSE OF MERCHANTABILITY AND FITNESS FOR A PARTICULAR PURPOSE ARE EXPRESSLY EXCLUDED.

CAUTION: This product is combustible. Protect from high heat sources. For more information, consult MSDS, call Dow at 1-866-583-BLUE (2583) or contact your local building inspector. In an emergency, call 1-989-636-4400.

Building and/or construction practices unrelated to building materials could greatly affect moisture and the potential for mold formation. No material supplier including Dow can give assurance that mold will not develop in any specific system.

www.dowlowtempolutions.com

THE DOW CHEMICAL COMPANY . Dow Building Solutions . 200 Larkin . Midland, MI 48674

For Technical Information: 1-866-583-BLUE (2583)

For Sales Information: 1-800-232-2436